



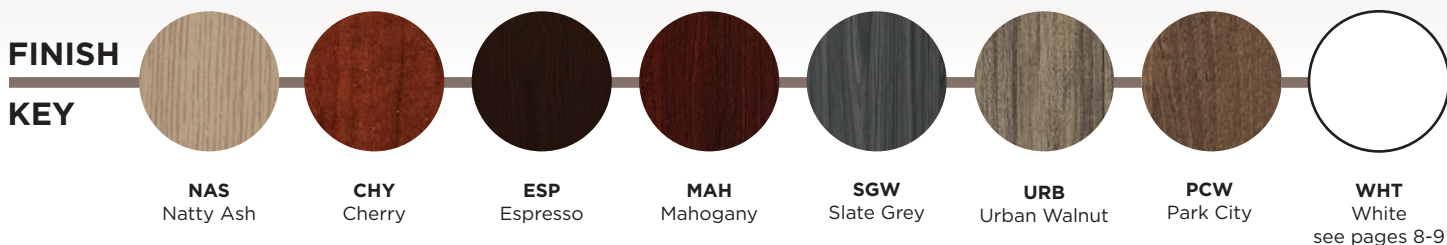
OSP
furniture

NAPA COLLECTION



NAPA modular laminate casegoods provide extensive selection, capability and value. Full 1-1/8" thick worksurfaces and 2"-thick table tops are built with high-grade, contract-quality wood grain laminates. Napa is CARB compliant and GREENGUARD certified. Impact-resistant 3mm edges include a reeded edge detail. Choose from standard and StepFront style desks.

Napa colors coordinate with **Systems IN STOCK**, OSP Ascend II™ Height Adjustable, Training Tables, Multipurpose Bookcases, Study Carrels and more.



Napa Standard Pulls



Black Pulls are standard on CHY, MAH, NAS, SGW, URB & WHT Napa.



Metallic Pulls are standard on ESP & PCW Napa.

new Optional Pulls



DPN5BOW-B
Black
List:
(5-Pack)



DPN5BOW-S
Silver Metallic
List:
(5-Pack)



DPN5CRE-B
Black
List:
(5-Pack)



DPN5CRE-S
Silver Metallic
List:
(5-Pack)

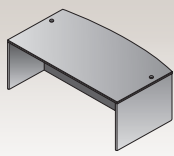


DPN5BAR-B
Black
List:
(5-Pack)

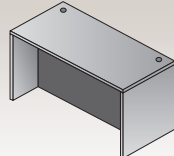


DPN5BAR-S
Brushed Silver
List:
(5-Pack)

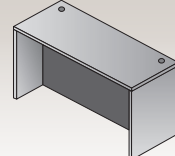
DESKS



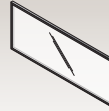
NAP-89-xxx
Bow Desk Shell
71"x41"x29"
CU:7.31 WT:173
List Price:



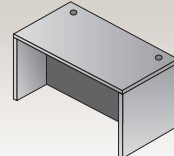
NAP-01-xxx
Desk Shell
71"x36"x29"
CU:6.36 WT:162
List Price:



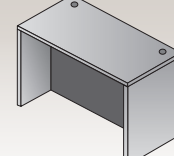
NAP-101-xxx
Desk Shell
71"x30"x29"
CU:5.3 WT:121.0
List Price:



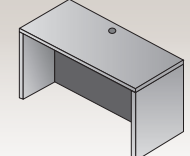
NAP-88
Glass Modesty Panel
Fits NAP01, NAP87L,
NAP87R, NAP89, NAP-101
69"x28"x1" CU:3.06 WT:56
Use: NAP85 & NAP 86
Pedestals
List Price:



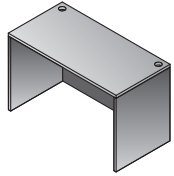
NAP-02-xxx
Desk Shell
66"x30"x29"
CU:5.08 WT:136
List Price:



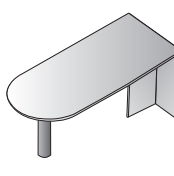
NAP-03-xxx
Desk Shell
60"x30"x29"
CU:4.63 WT:128
List Price:



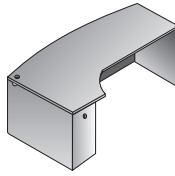
NAP-21-xxx
Desk Shell
48"x30"x29"
CU:4.8 WT:110
List Price:



NAP-22-xxx
Desk Shell
48"x24"x29"
CU:3.6 WT:81
List Price:



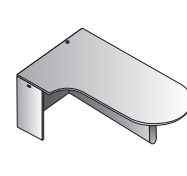
NAPxxx-47
Bullet
71"x36"x29"
CU:6.64 WT:117
Consists of:
NAP-47T, 47PBLK
List Price:



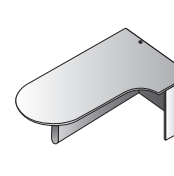
NAP-87TL-xxx
Left Corner Desk
71"x30"/48"x29"
CU:8.4 WT:184.1
List Price:



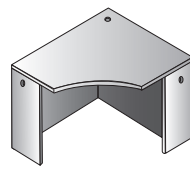
NAP-87TR-xxx
Right Corner Desk
71"x30"/48"x29"
CU:8.4 WT:184.1
List Price:



NAPxxx-57L
Left Computer Corner
Bullet
71"x30"/42"x29"
CU:8.2 WT:145.5
Consists of:
NAP57TL, 57PBLK
List Price:

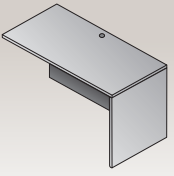


NAPxxx-57R
Right Computer Corner
Bullet
71"x30"/42"x29"
CU:8.2 WT:145.5
Consists of:
NAP57TR, 57PBLK
List Price:

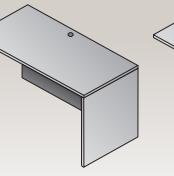


NAP-83-xxx
Corner Unit
42"x42"x29"
CU:5.0 WT:126
List Price:

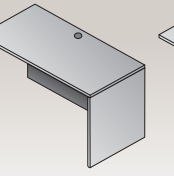
RETURNS



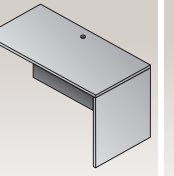
NAP-45-xxx
Return Shell
47"x23.5"x29"
CU:3.81 WT:90
List Price:



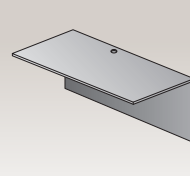
NAP-96-xxx
Return Shell
42"x23.5"x29"
CU:3.41 WT:79
List Price:



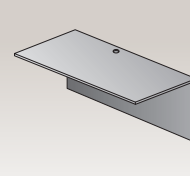
NAP-46-xxx
Return Shell
42"x20"x29"
CU:3.42 WT:88
List Price:



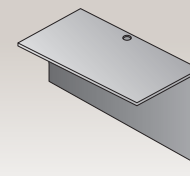
NAP-92-xxx
Return Shell
36"x23.5"x29"
CU:2.95 WT:74
List Price:



NAP-70-xxx
Bridge
47"x23.5"x29"
CU:2.94 WT:71
List Price:



NAP-98-xxx
Bridge
42"x23.5"x29"
CU:2.63 WT:63
List Price:

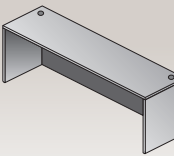


NAP-93-xxx
Bridge
35"x23.5"x29"
CU:2.24 WT:56
List Price:

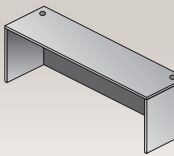
**Use with NAP76 Ped

BRIDGES

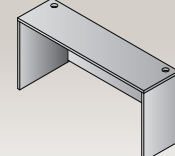
CREDENZAS



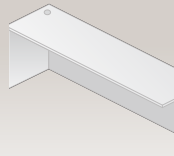
NAP-43-xxx
Credenza Shell
71"x24"x29"
CU:4.97 WT:122
List Price:



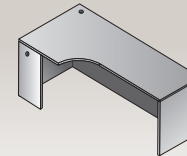
NAP-11-xxx
Credenza Shell
66"x24"x29"
CU:4.64 WT:112
List Price:



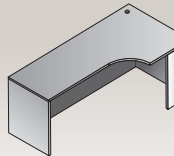
NAP-08-xxx
Credenza Shell
60"x24"x29"
CU:4.3 WT:119
List Price:



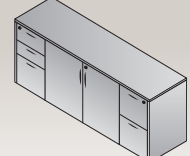
NAP-SL2-xxx
Support Leg (2-pack)
11"x28"H
CU:0.8 WT:9.0
List Price:



NAP-82L-xxx
Left Corner Credenza
71"x36"x29"
CU:6.36 WT:149
List Price:

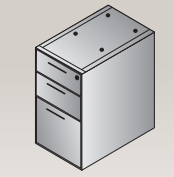


NAP-82R-xxx
Right Corner Credenza
71"x36"x29"
CU:6.36 WT:149
List Price:

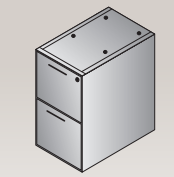


NAPxxx-110
Storage Credenza
71"x22.5"x29"
CU:16.7 WT:224
Consists of:
NAP-110A, 110B
List Price:

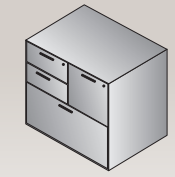
PEDESTALS



NAP-65-xxx
BBF Ped
15.5"x22"x28"
CU:7.41 WT:78
List Price:
Ships Assembled



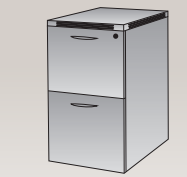
NAP-74-xxx
FF Ped
15.5"x22"x28"
CU:7.41 WT:74
List Price:
Ships Assembled



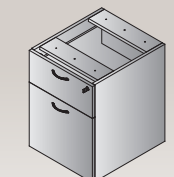
NAP-69-xxx
MultiFile Ped
31"x22"x29"
CU:14.4 WT:154
List Price:
Ships Assembled



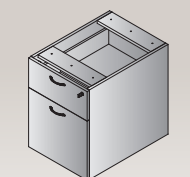
NAP-85-xxx
Mobile BBF Ped
14"x22"x27H"
CU:6.78 WT:75
List Price:
Ships Assembled,
except casters



NAP-86-xxx
Mobil FF Ped
14"x22"x27H"
CU:6.78 WT:71
List Price:
Ships Assembled,
except casters

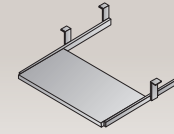


NAP-76-xxx
Hanging Ped-20" Return
15.5"x18.5"x21"
CU:4.85 WT:51
List Price:
Ships Assembled
Use with NAP46

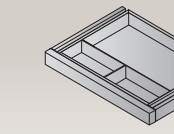


NAP-80-xxx
Hanging BF Ped
15.5"x22"x21"
CU:5.73 WT:61
List Price:
Ships Assembled

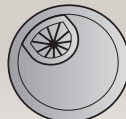
ACCESSORIES Power Modules & Chargers on page 6-7



NAP-14-xxx
Keyboard Tray
26"x12"
CU:0.6 WT:13
List Price:



NAP-15-xxx
Center Drawer
20"x15"
CU:0.82 WT:9
List Price:



NAP-GM
Metallic Grommets (5-Pack)
2.5"x2.5"x1"
CU:0.02 WT:1
List Price:



NAP-PB
Black Drawer Pulls
(10-Pack)
4"x1"x0.5"
CU:0.005 WT:0.01
List Price:

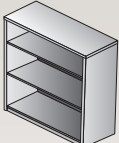
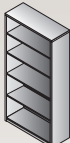
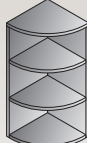
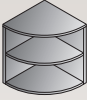
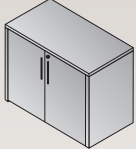
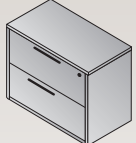
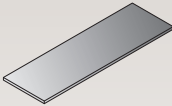




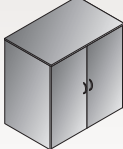
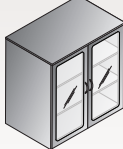
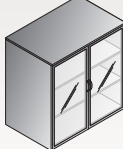
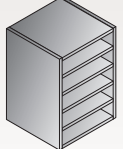


NAP-PM
Metallic Drawer Pulls
(10-Pack)
4"x1"x0.5"
CU:0.02 WT:1
List Price:

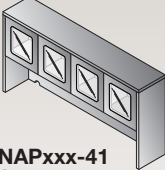
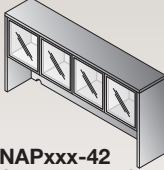
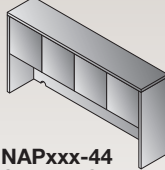
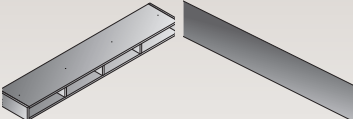

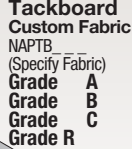
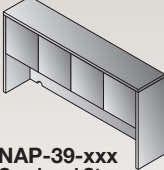
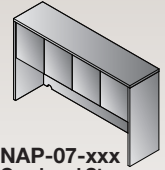
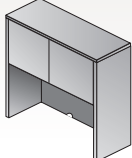
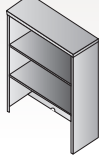
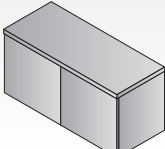
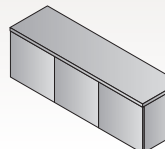
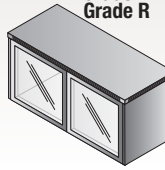
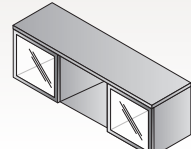
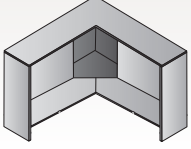


LK1-GC
Lock Core with Keys
List
KC-GC Change
List
KM-GC Master
KeyList

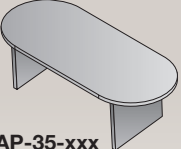
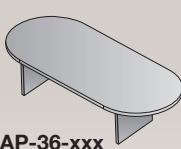
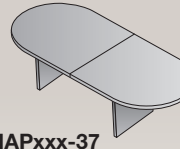
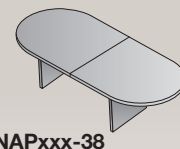
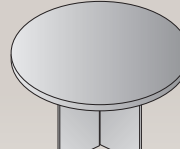
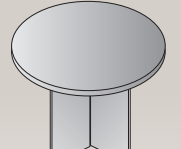






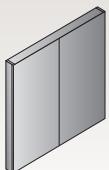
STORAGE & FILING

 NAP-55-xxx 3-Shelf Bookcase 35.5"x14"x42" CU:4.45 WT:98 List Price:	 NAP-56-xxx 5-Shelf Bookcase 35.5"x14"x65" CU:6.83 WT:150 List Price:	 NAP-253-xxx 36" H Quarter-Round Open Hutch 15Wx15D 15"x15"x36" CU:1.65 WT:42 List Price:	 NAP-254-xxx 29" H Quarter-Round Bookcase 24Wx24D 24"x24"x29"CU:2.46 WT:62 List Price:	 NAP-13-xxx Storage Cabinet 35.5"x22.25"x29" CU:5.02 WT:118 List Price:	 NAP-12-xxx Lateral File 35.5"x22.25"x29" CU:16.79 WT:150 List Price: <i>Ships Assembled</i>	 NAP-T1213-xxx NAP12/13 Combo Top 71"x22.5" CU:1.59 WT:49 List Price:	 NAP-109-xxx Four-Drawer Lateral File 36"x22.5"x53" CU:32.31 WT:201 List Price: <i>Ships Assembled</i>
 NAP-156-xxx 65"H Storage Cabinet with 5 Shelves 35.5"x22.5"x65" CU:10.3 WT:236 List Price:	 NAP-152-xxx Storage Cabinet 23.5"x22.5"x65" CU:25.69 WT:179 List Price: <i>Ships Assembled</i>	 NAP-161-xxx 52"H Storage Cabinet 24"x24"x52" CU:24.1 WT:172 List Price: <i>Ships Assembled Available in SGW, URB & WHT only</i>	 NAPxxx-212DW 36"H Storage Cabinet w/Wood Doors 35.5"x22.5"x36" CU:5.5 WT:154.3 List Price: <i>Consists of: NAP-212H,2DW</i>	 NAPxxx-212DC 36"H Storage Cabinet w/Glass/Wood Doors 35.5"x22.5"x36" CU:5.7 WT:155.4 List Price: <i>Consists of: NAP-212H,2DC</i>	 NAPxxx-212DG 36"H Storage Cabinet w/Glass/Alum. Doors 35.5"x22.5"x36" CU:5.7 WT:155.4 List Price: <i>Consists of: NAP-212H,2DG</i>	 NAP-VO-BLK Vertical Organizer, Black 12.5"x12.5"x18.5" CU:0.83 WT:26 List Price:	

HUTCHES

 NAPxxx-41 Overhead with Wood/Glass Doors 71"x15"x36" CU:6.3 WT:140 List Price: <i>Consists of: NAP-44H,4DC</i>	 NAPxxx-42 Overhead with Glass Doors 71"x15"x36" CU:6.5 WT:136 List Price: <i>Consists of: NAP-44H,4DG</i>	 NAPxxx-44 Overhead Storage 71"x15"x36" CU:5.98 WT:140 List Price: <i>Consists of: NAP-44H,4DW</i>	 NAP-HO-BLK Horizontal Organizer, Black Fits NAP41, 42 & 44 68.7"x13"x5" CU:3.27 WT:39 List Price: <i>Ships Assembled</i>	 NAPTb-3 Tackboard for NAP42/44 SON44, KEN42/44 65"x17.5" Black Fabric CU:1.12 WT:15 List Price:	 Tackboard Custom Fabric NAPTb (Specify Fabric) Grade A Grade B Grade C Grade R	 NAP-39-xxx Overhead Storage 66"x15"x36" CU:7.2 WT:126 List Price:	 NAP-07-xxx Overhead Storage 60"x15"x36" CU:6.7 WT:107 List Price:
 NAP-34-xxx Hutch with Doors 48"x15"x36" CU:4.24 WT:101 List Price:	 NAP-53-xxx Open Hutch 35.5"x14"x36" CU:3.86 WT:82 List Price:	 NAP-WM36-xxx Wall-Mount Overhead 36"x15"x17" CU:6.62 WT:55 List Price: <i>Ships Assembled</i>	 NAP-WM48-xxx Wall-Mount Overhead 48"x15"x17" CU:8.74 WT:71 List Price: <i>Ships Assembled</i>	 NAPxxx-WM36DG Wall-Mount Overhead with Glass Doors 36"x15"x17" CU:2.2 WT:54 List Price: <i>Consists of: NAPWM36H,NAPWMDG</i>	 NAPxxx-WM48DG Wall-Mount Overhead with Glass Doors 48"x15"x17" CU:2.7 WT:72 List Price: <i>Consists of: NAPWM48H,NAPWMDG</i>	 NAP-84-xxx ** Corner Hutch 42"x42"x36" CU:7.05 WT:142 List Price: <i>Not Available in NAS, PCW or SGW</i>	

CONFERENCE

 NAP-35-xxx Conference Table 71"x35"x29" CU:6.67 WT:139 List Price:	 NAP-36-xxx Conference Table 95"x44"x29"CU:10.79 WT:190 List Price:	 NAPxxx-37 Conference Table 120"x48"x29" CU:11.3 WT:247 List Price: <i>Consists of: NAP-37T,37S</i>	 NAPxxx-38 Conference Table 144"x48"x29" CU: 14.2 WT: 294 List Price: <i>Consists of: NAP-38T,38S</i>	 NAP-23-xxx RoundTable 47"Dia.x29"H CU:5.37 WT:109 List Price:	 NAP-27-xxx RoundTable 42"Dia.x29"H CU:4.3 WT:95 List Price:
 29"H Tables with Black Metal Base			 42"H Tables with Black Metal Base		
 NAPxxx-32 30"Dia.x29"H CU:3.1 WT:45.4 List Price: <i>Consists of: NAP-32T,33B</i>	 NAPxxx-33 36"Dia.x29"H CU:3.1 WT:58.4 List Price: <i>Consists of: NAP-33T,33B</i>	 NAPxxx-132 30"Dia.x42"H CU:4.0 WT:46 List Price: <i>Consists of: NAP-32T,32B</i>	 NAPxxx-133 36"Dia.x42"H CU:4.0 WT:59.1 List Price: <i>Consists of: NAP-33T,32B</i>	 NAP-100-xxx Presentation Board 48"x48" CU:8.48 WT:101 List Price: <i>Ships Assembled</i>	



Slate Grey



Cherry

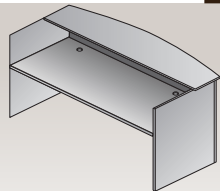


Urban Walnut

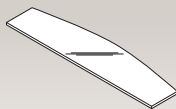
Wall-mount overheads with wood doors (shown above) or glass doors. Choose from full, ¾ and mobile pedestals, plus multifile and lateral file options.

Reception L workstation shown above with optional add-on glass top. Provides extensive work area.

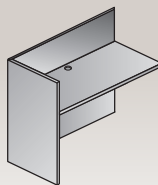
RECEPTION



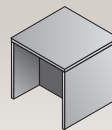
NAP-122-xxx
Reception Desk Shell
71"x35.75"/30"x41.5"
CU:8.27 WT:207
List Price:



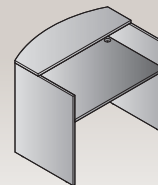
NAP-123
Glass Floating Top
Fits NAP122
71"x17.5"x0.5"
CU:1.92 WT:79
List Price:



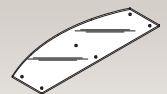
NAP-125-xxx
Reception Return Shell
42"x24"x41"
CU:4.13 WT:100
List Price:



NAP-20-xxx
End Table
24"x24"x20"
CU:2.03 WT:50
List Price:

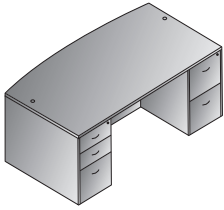


NAP-121-xxx
48" Reception
Desk Shell
48"x35.75"/30"x41.5"
CU: 7.4 WT: 163
List Price:
Not Available in:
CHY, MAH or URB

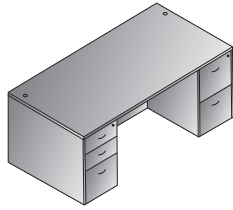


NAP-126
48"W Glass Top
*Fits NAP121ESP
48"x17.5"x48"
CU: 1.34 WT: 47
List Price:

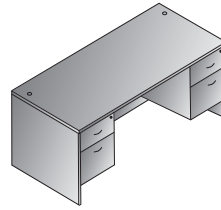
TYPICALS



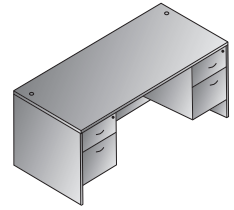
Bow Top Desk 71"x41"
NAPxxx-TYP1
 21.3 cu. ft. 325.3 lbs.
 Consists of: NAP-89,65,74



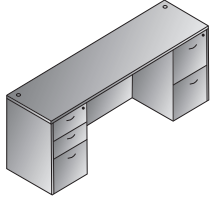
Double Pedestal Desk 71"x35"
NAPxxx-TYP2
 20.4 cu. ft. 314.2 lbs.
 Consists of: NAP-01,65,74



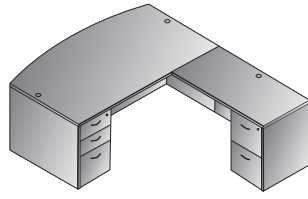
Double Pedestal Desk 66"x30"
NAPxxx-TYP3
 15.7 cu. ft. 256.8 lbs.
 Consists of: NAP-02,80,80



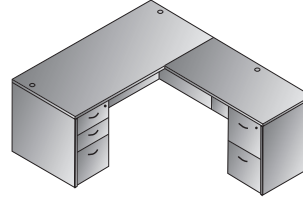
Double Pedestal Desk 60"x30"
NAPxxx-TYP4
 15.2 cu. ft. 249.1 lbs.
 Consists of: NAP-03,80,80



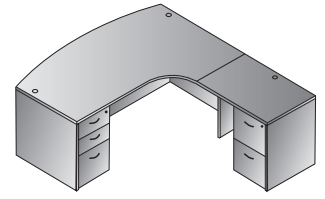
Kneespace Credenza 71"x24"
NAPxxx-TYP5
 19.1 cu. ft. 274.6 lbs.
 Consists of: NAP-43,65,74



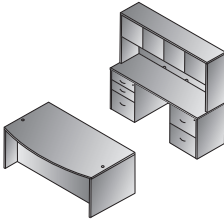
L Shape w/Bow Top Desk 71"x89"
NAPxxx-TYP8
 25.1 cu. ft. 415.7 lbs.
 Consists of: NAP-89,65,45,74



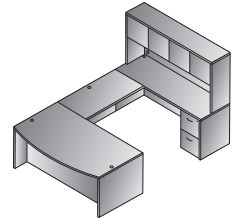
L Shape 66"x78"
NAPxxx-TYP9
 22.9 cu. ft. 378.2 lbs.
 Consists of: NAP-02,65,45,74



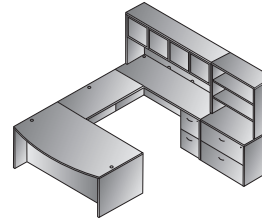
Right L Shape w/Curved Corner
 71"x83"
NAPxxx-TYP10R
 25.3 cu. ft. 410.2 lbs.
 Consists of: NAP-87TR,65,92,74



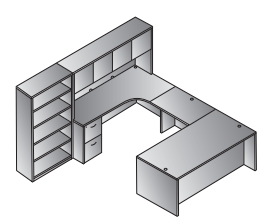
Executive Office
NAPxxx-TYP11
 47.3 cu. ft. 739.9 lbs.
 Consists of: NAP-89,65,74,43, 65,74,44
 NAP-44 consists of: NAP-44H,4DW



U Shape w/Hutch 71"x113"
NAPxxx-TYP12
 36.1 cu. ft. 658.2 lbs.
 Consists of: NAP-89,65,70,43, 74,44
 NAP-44 consists of: NAP-44H,4DW



U Shape w/Hutch + Storage 108"x113"
NAPxxx-TYP13
 55.5 cu. ft. 889.7 lbs.
 Consists of: NAP-89,65,70,43,74,44,12,53
 NAP-44 consists of: NAP-44H,4DW



Left U + Bookcase 107"x107"
NAPxxx-TYP14L
 42.7 cu. ft. 809.1 lbs.
 Consists of: NAP-01,65,93, 82R,74,44,56
 NAP-44 consists of: NAP-44H,4DW



Park City

Grommet Chargers



PM7102B

Grommet Charger
 Includes:
 (2) USB Type-C
 & (1) A/C ports



PM7102W

Fits Napa grommet
 hole without pedestal
 mounted below.



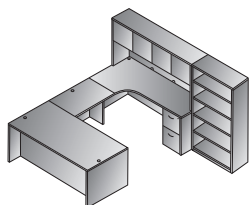
NAP109
Four-Drawer Lateral File



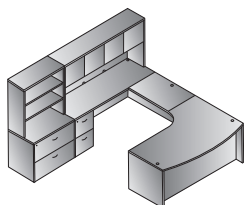
NAP152
Storage Cabinet



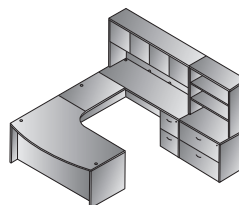
NAP12
Lateral File
NAP53
Open Hutch



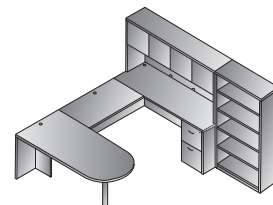
Right U + Bookcase 107"x107"
NAPxxx-TYP14R
42.7 cu. ft. 809.1 lbs.
Consists of: NAP-01,65,93, 82L,74,44,56
NAP-44 consists of: NAP-44H,4DW



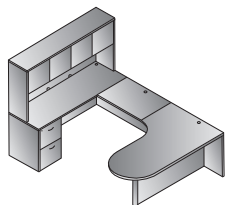
Left U w/Corner + Storage 107"x107"
NAPxxx-TYP15L
56.0 cu. ft. 886.4 lbs.
Consists of: NAP-87L,65,93,43,74,44,12,53
NAP-44 consists of: NAP-44H,4DW



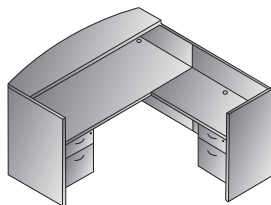
Right U w/Corner + Storage 107"x107"
NAPxxx-TYP15R
56.0 cu. ft. 886.4 lbs.
Consists of: NAP-87R,65,93,43, 74,44,12,53
NAP-44 consists of: NAP-44H,4DW



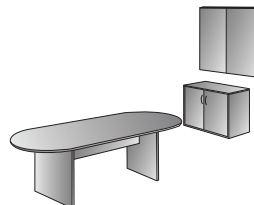
U w/Bullet + Bookcase 107"x108"
NAPxxx-TYP16
35.2 cu. ft. 673.5 lbs.
Consists of: NAP-47,70,43, 74,44,56
NAP-44 consists of: NAP-44H,4DW
NAP-47 consists of: NAP-47T,47PBLK



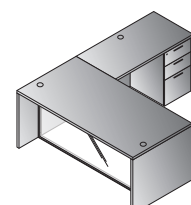
U w/Left Corner Bullet 71"x101"
NAPxxx-TYP18L
29.4 cu. ft. 538 lbs.
Consists of: NAP-57L,93,43,74,44
NAP-44 consists of: NAP-44H,4DW
NAP-57L consists of: NAP-57TL,57PBLK



Reception Station 71"x77"x42"H
NAPxxx-TYP19
22.2 cu. ft. 418.8 lbs.
Consists of: NAP-122,80,125,76



Conference Group 3-Pcs.
NAPxxx-TYP20
24.8 cu. ft. 408.9 lbs.
Consists of: NAP-36,13,100



L-Shape w/Glass Modesty Panel
71"x84"
NAPxxx-TYP29G
19.3 cu. ft. 386.9 lbs.
Consists of: NAP-01,45,65,88

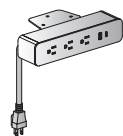


NAPTYP205
Storage Credenza
Consists of: NAP-T1213,12,13

USB/Power Chargers



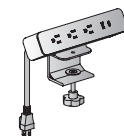
PM8311W



PM8311B Black
PM8311W White
Power Charger
Undersurface Mount
Includes: USB Type-C,
USB Type-A & (3) A/C plugs
CU:0.2 WT:1
List Price:



PM5311B



PM5311B Black
PM5311W White
Power Charger
Clamp-Mount
Includes: USB Type-C,
USB Type-A & (3) A/C plugs
Fits 1/2" - 1 1/2" surfaces
CU:0.2 WT:1
List Price:

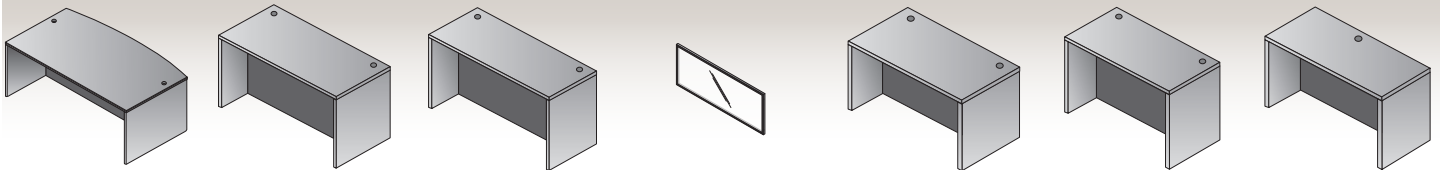


Introducing contemporary White laminate -- now available on an extensive selection of Napa items as shown on these pages. Includes the same features, functions and specifications as other Napa colors - in a modern white laminate & 3mm impact-resistant edges. Coordinates with our **Systems** *IN STOCK*, Ascend II height-adjustable, Training Table and Tuxedo Conference offerings.

NAPA

WHITE

DESKS



NAP-89-WHT
Bow Desk Shell
71"x41"x29"
CU:7.31 WT:173
List Price:

NAP-01-WHT
Desk Shell
71"x36"x29"
CU:6.36 WT:162
List Price:

NAP-101-WHT
Desk Shell
71"x30"x29"
CU:5.3 WT:121.0
List Price:

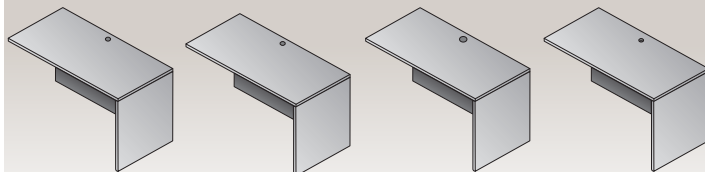
NAP-88
Glass Modesty Panel
Fits NAP01, NAP87L,
NAP87R, NAP89, NAP-101
69"x28"x1" CU:3.06 WT:56
Use: NAP85 & NAP 86
Pedestals
List Price:

NAP-02-WHT
Desk Shell
66"x30"x29"
CU:5.08 WT:136
List Price:

NAP-03-WHT
Desk Shell
60"x30"x29"
CU:4.63 WT:128
List Price:

NAP-21-WHT
Desk Shell
48"x30"x29" CU:4.8
WT:110
List Price:

RETURNS



NAP-45-WHT
Return Shell
47"x23.5"x29"
CU:3.81 WT:90
List Price:

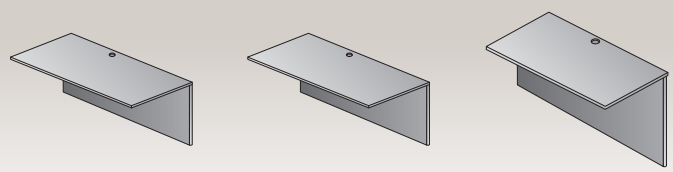
NAP-96-WHT
Return Shell
42"x23.5"x29"
CU:3.41 WT:79
List Price:

NAP-46-WHT
Return Shell
42"x20"x29"
CU:3.42 WT:88
List Price:

NAP-92-WHT
Return Shell
36"x23.5"x29"
CU:2.95 WT:74
List Price:

***Use with NAP76 Ped*

BRIDGES

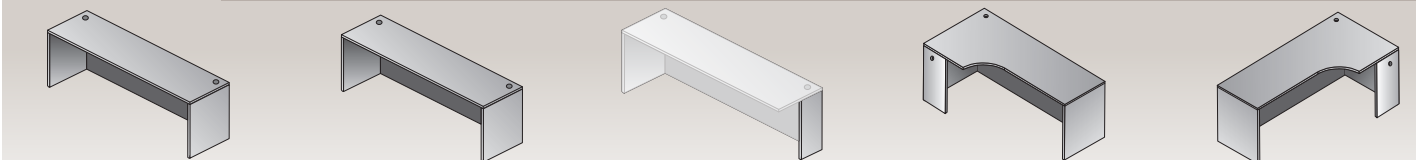


NAP-70-WHT
Bridge
47"x23.5"x29"
CU:2.94 WT:71
List Price:

NAP-98-WHT
Bridge
42"x23.5"x29"
CU:2.63 WT:63
List Price:

NAP-93-WHT
Bridge
35"x23.5"x29"
CU:2.24 WT:56
List Price:

CREDENZAS



NAP-43-WHT
Credenza Shell
71"x24"x29"
CU:4.97 WT:122
List Price:

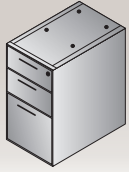
NAP-11-WHT
Credenza Shell
66"x24"x29"
CU:4.64 WT:112
List Price:

NAP-SL2-WHT
Support Leg (2-pack)
11"x28"H
CU:0.8 WT:9.0
List Price:

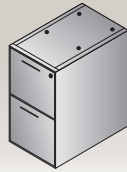
NAP-82L-WHT
Left Corner Credenza
71"x36"x29"
CU:6.36 WT:149
List Price:

NAP-82R-WHT
Right Corner Credenza
71"x36"x29"
CU:6.36 WT:149
List Price:

PEDESTALS



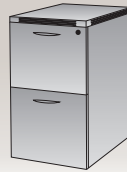
NAP-65-WHT
BBF Ped
15.5"x22"x28" CU:7.41 WT:78
List Price:
Ships Assembled



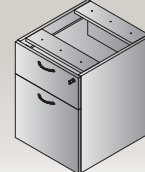
NAP-74-WHT
FF Ped
15.5"x22"x28" CU:7.41 WT:74
List Price:
Ships Assembled



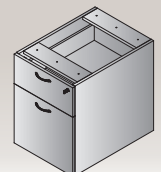
NAP-85-WHT
Mobile BBF Ped
14"x22"x27H" CU:6.78 WT:75
List Price:
Ships Assembled, except casters



NAP-86-WHT
Mobil FF Ped
14"x22"x27H" CU:6.78 WT:71
List Price:
Ships Assembled, except casters

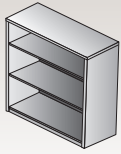


NAP-76-WHT
Hanging Ped-20" Return
15.5"x18.5"x21" CU:4.85
List Price:
Ships Assembled, Use with NAP46

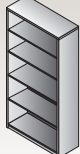


NAP-80-WHT
Hanging BF Ped
15.5"x22"x21" CU:5.73 WT:61
List Price:
Ships Assembled

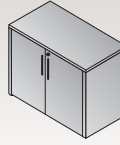
STORAGE & FILING



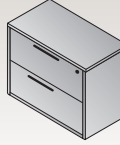
NAP-55-WHT
3-Shelf Bookcase
35.5"x14"x42"
CU:4.45 WT:98
List Price:



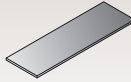
NAP-56-WHT
5-Shelf Bookcase
35.5"x14"x65"
CU:6.83 WT:150
List Price:



NAP-13-WHT
Storage Cabinet
35.5"x22.25"x29"
CU:5.02 WT:118
List Price:



NAP-12-WHT
Lateral File
35.5"x22.25"x29"
CU:16.79 WT:150
List Price:
Ships Assembled



NAP-T1213-WHT
Combo Top
71"x22.5"
CU:1.59 WT:49
List Price:



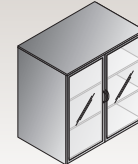
NAP-152-WHT
Storage Cabinet
23.5"x22.5"x65"
CU:25.69 WT:179
List Price:
Ships Assembled



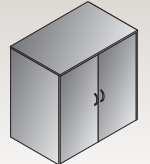
NAP-161-WHT
52"H Storage Cabinet
24"x24"x52"
CU:24.1 WT:172
List Price:
Ships Assembled Available in SGW, URB & WHT only



NAP-156-WHT
65"H Storage Cabinet with 5 Shelves
35.5"x22.5"x65"
CU:10.3 WT:236
List Price:

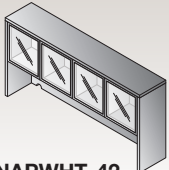


NAPWHT-212DG
37"H Storage Cabinet w/Glass/Alum. Doors
36"x22"x37"
CU:5.7 WT:155.4
Consists of: NAP-212H,2DG
List Price:
Use Freestanding or w/NAP12

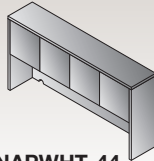


NAPWHT-212DW
36"H Storage Cabinet w/Wood Doors
35.5"x22.5"x36"
CU:5.5 WT:154.3
Consists of: NAP-212H,2DW
List Price:
Use Freestanding or w/NAP12

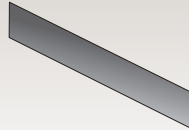
HUTCHES



NAPWHT-42
Overhead with Glass Doors
71"x15"x36"
CU:6.5 WT:136
Consists of: NAP-44H,4DG
List Price:

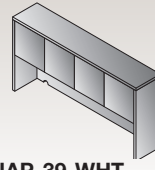


NAPWHT-44
Overhead Storage
71"x15"x36"
CU:5.98 WT:140
Consists of: NAP-44H,4DW
List Price:

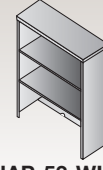


NAPTb-3
Tackboard for NAP42/44
SON44, KEN42/44
65"x17.5"
Black Fabric
CU:1.12 WT:15
List Price:

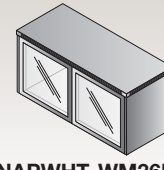
Tackboard Custom Fabric
NAPTb-____
(Specify Fabric)
Grade A
Grade B
Grade C



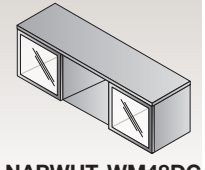
NAP-39-WHT
Overhead Storage
66"x15"x36"
CU:7.2 WT:126
List Price:



NAP-53-WHT
Open Hutch
35.5"x14"x36"
CU:3.86 WT:82
List Price:

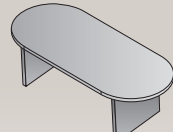


NAPWHT-WM36DG
Wall-Mount Overhead with Glass Doors
36"x15"x17"
CU:2.2 WT:54
Consists of: NAPWM36H,NAPWMDG
List Price:

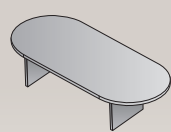


NAPWHT-WM48DG
Wall-Mount Overhead with Glass Doors
48"x15"x17"
CU:2.7 WT:72
Consists of: NAPWM48H,NAPWMDG
List Price:

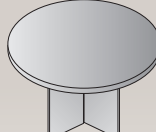
CONFERENCE



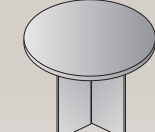
NAP-35-WHT
Conference Table
71"x35"x29"
CU:6.67 WT:139
List Price:



NAP-36-WHT
Conference Table
95"x44"x29" CU:10.79
WT:190
List Price:



NAP-23-WHT
Round Table
47"Dia.x29"H
CU:5.37 WT:109
List Price:



NAP-27-WHT
Round Table
42"Dia.x29"H
CU:4.3 WT:95
List Price:



29"H Tables with Black Metal Base

NAPxxx-32
30"Dia.x29"H
CU:3.1 WT:45.4
Consists of: NAP-32T,33B
List Price:



NAPxxx-33
36"Dia.x29"H
CU:3.1 WT:58.4
Consists of: NAP-33T,33B
List Price:



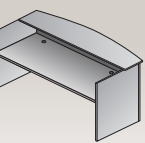
42"H Tables with Black Metal Base

NAPxxx-132
30"Dia.x42"H
CU:4.0 WT:46
Consists of: NAP-32T,32B
List Price:

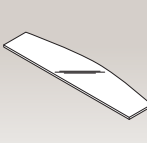


NAPxxx-133
36"Dia.x42"H
CU:4.0 WT:59.1
Consists of: NAP-33T,32B
List Price:

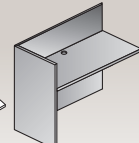
RECEPTION



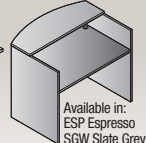
NAP-122-WHT
Reception Desk Shell
71"x35.75"/30"x41.5"
CU:8.27 WT:207
List Price:



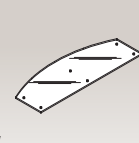
NAP-123
Glass Floating Top
Fits NAP122
71"x17.5"x0.5"
CU:1.92 WT:79
List Price:



NAP-125-WHT
Reception Return Shell
42"x24"x41"
CU:4.13 WT:100
List Price:



NAP-121-WHT
48" Reception Desk Shell
48"x35.75"/30"x41.5"
CU: 7.4 WT: 163
List Price:



NAP-126
48"W Glass Top
*Fits NAP121ESP
48"x17.5"x48"
CU: 1.34 WT: 47
List Price:



NAP-27-WHT table and NAP-56-WHT bookcase shown with 8840W-5 chair

NAPA

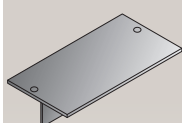
STEPFRONT



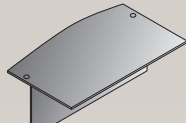
Urban Walnut

URBAN WALNUT | SLATE GREY
ESPRESSO | CHERRY | MAHOGANY | PARK CITY

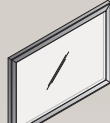
STEPFRONT



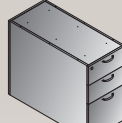
NAP-201-xxx
Desk Top/Modesty
Set
71"x36"x29"
CU:3.36 WT:90
List Price:



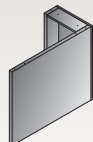
NAP-289-xxx
Bow Top/Modesty
Set
71"x40"x29"
CU:3.88 WT:95
List Price:



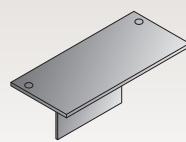
NAP-200
Glass Modesty Panel
for NAP201 & 289
Desk
40"x28"x1"
CU:1.82 WT:35
List Price:



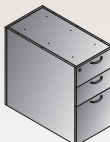
NAP-265-xxx
36" Deep Desk
Pedestal
Box/File
15.5"x35.3"x28"
CU:11.56 WT:90
List Price:
Ships Assembled



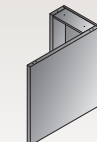
NAP-271-xxx
36" Deep
False Pedestal
15.5"x35.3"x28"
CU:4.63 WT:40
List Price:



NAP-202-xxx
Desk Top/Modesty
Set
66"x30"x29"
CU:2.66 WT:73
List Price:



NAP-263-xxx
30" Deep Pedestal
Box/File
15.5"x29.8"x28"
CU:9.86 WT:86
List Price:
Ships Assembled



NAP-267-xxx
30" Deep
False Pedestal
15.5"x29.8"x28"
CU:3.95 WT:90
List Price:



Espresso

Napa Standard Pulls



Black Pulls are standard on CHY, MAH, NAS, SGW, URB & WHT Napa.



Metallic Pulls are standard on ESP & PCW Napa.

new Optional Pulls



DPN5BOW-B
Black
List:
(5-Pack)



DPN5CRE-B
Black
List:
(5-Pack)



DPN5BAR-B
Black
List:
(5-Pack)



DPN5BOW-S
Silver Metallic
List:
(5-Pack)

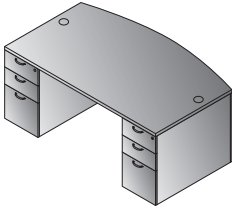


DPN5CRE-S
Silver Metallic
List:
(5-Pack)

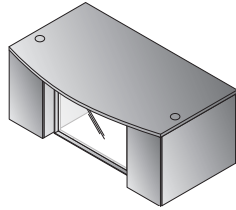


DPN5BAR-S
Brushed Silver
List:
(5-Pack)

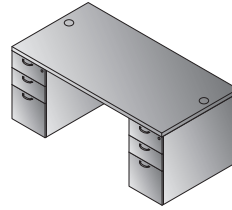
STEPFRONT TYPICALS



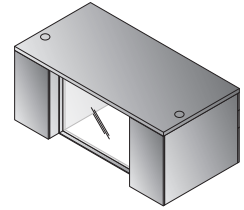
Bow Top Desk 71"x40"
NAPxxx-TYP201
24.6 cu. ft. 275.6 lbs.
Consists of: NAP-289,265 (2qty.)



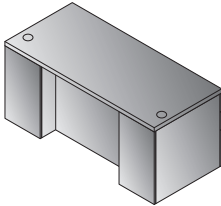
Bow Top Desk w/Glass Modesty Panel 71"x40"
NAPxxx-TYP201G
25.8 cu. ft. 310.9 lbs.
Consists of: NAP-289,200,265 (2qty.)



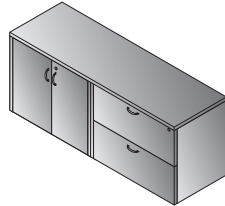
Double Pedestal Desk 71"x36"
NAPxxx-TYP202
24 cu. ft. 271.2 lbs.
Consists of: NAP-201,265 (2qty.)



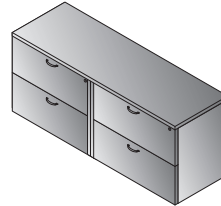
Double Pedestal Desk w/Glass Modesty Panel 71"x36"
NAPxxx-TYP202G
25.3 cu. ft. 306.4 lbs.
Consists of: NAP-201,200,265 (2qty.)



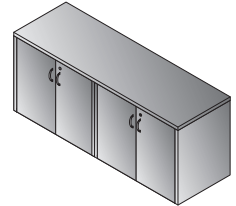
Double Pedestal Desk 66"x30"
NAPxxx-TYP203
20.3 cu. ft. 244.7 lbs.
Consists of: NAP-202,263 (2qty.)



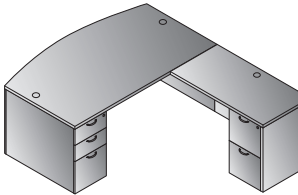
Combo Credenza 71"x23"
NAPxxx-TYP205
21.5 cu. ft. 316.4 lbs.
Consists of: NAP-T1213,12,13



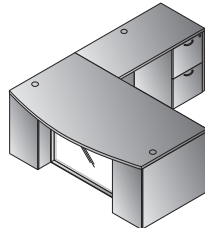
Double Lateral File Credenza 71"x23"
NAPxxx-TYP206
32 cu. ft. 348.3 lbs.
Consists of: NAP-T1213,12 (2qty.)



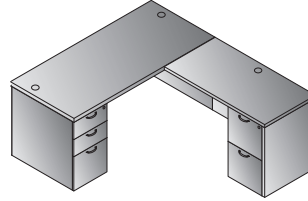
4-Door Storage Credenza 71"x23"
NAPxxx-TYP207
10.9 cu. ft. 284.5 lbs.
Consists of: NAP-T1213,13 (2qty.)



L-Shape w/Bow Top Desk 71"x88"
NAPxxx-TYP208
29.7 cu. ft. 389.2 lbs.
Consists of: NAP-289,265,271,45,74



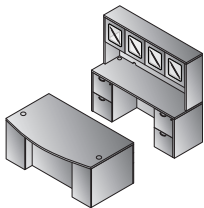
L-Shape w/Bow Top Desk and Glass Modesty Panel 71"x88"
NAPxxx-TYP208G
30.9 cu. ft. 420.1 lbs.
Consists of: NAP-289,200,265,271,45,74



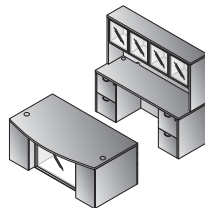
L-Shape 66"x78"
NAPxxx-TYP209
26.2 cu. ft. 358.3 lbs.
Consists of: NAP-202,263,267,45,74



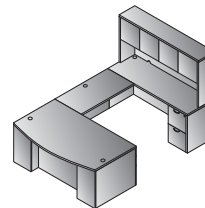
All Napa drawers have matching interiors.



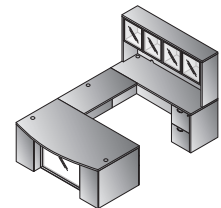
Executive Office
NAPxxx-TYP211
49.5 cu. ft. 684.6 lbs.
Consists of: NAP-289,265 (2qty.)
43,74, (2qty.),41
NAPxxx-41 consists of: NAP-44H,4DC



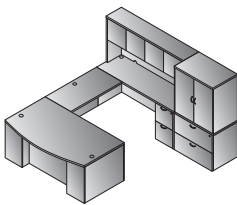
Executive Office w/Glass Modesty Panel
NAPxxx-TYP211G
51 cu. ft. 719.9 lbs.
Consists of: NAP-289,200,265 (2qty.)
43,74, (2qty.),42
NAPxxx-42 consists of: NAP-44H,4DG



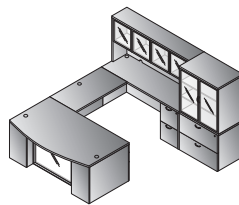
U-Shape with Hutch 71"x112"
NAPxxx-TYP212
40 cu. ft. 631.8 lbs.
Consists of: NAP-289,265,271
70,43,74,44
NAPxxx-44 consists of: NAP-44H,4DW



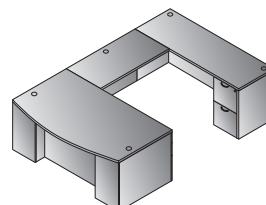
U-Shape w/Hutch & Glass Modesty Panel 71"x112"
NAPxxx-TYP212G
41.5 cu. ft. 662.7 lbs.
Consists of: NAP-289,200,265,271,
70,43,74,42
NAPxxx-42 consists of: NAP44H,4DG



U-Shape w/Hutch + File Storage 107"x112"
NAPxxx-TYP213
61 cu. ft. 936.1 lbs.
Consists of: NAP-289,265,271,70,43,
74,44,12,212DW
NAPxxx-44 consists of: NAP-44H,4DW
NAPxxx-212DW consists of: NAP-212H,2DW



U-Shape w/Hutch + File Storage & Glass Modesty Panel 107"x112"
NAPxxx-TYP213G
62.7 cu. ft. 968 lbs.
Consists of: NAP-289,200,265,271
70,43,74,42,12,212DG
NAPxxx-42 consists of: NAP-44H,4DG
NAPxxx-212DG consists of: NAP-212H,2DG



U-Shape 71"x112"
NAPxxx-TYP222
34.0 cu. ft. 491.8 lbs.
Consists of: NAP-289,265,271,70,43,74

StepFront

ESP - Espresso
SGW - Slate Grey
URB - Urban Walnut

New Jersey Only:
CHY - Cherry
MAH - Mahogany
PCW - Park City

NAPA

WOOD CHAIRS



NAP97

NAPA Chair
with Full Cushion Back
23W x 23.75D x 32.75H
Black Bonded Leather (-EC3)
*Available in Cherry, Espresso,
Mahogany, Slate Grey
and Urban Walnut*



NAPA97 in custom
Dillon Snow -R101
bleach-cleanable upholstery



NAP95

NAPA Chair
with Upholstered Back
22.5W x 22D x 31H
Black Bonded Leather (-EC3)
*Available in
Espresso and Mahogany*



NAP91

NAPA Chair
with Wood Back
22.75W x 22.75D x 31.5H
Black Fabric (-3)
Available in Espresso and Slate Grey

